



St Helens College

# STUDENT EXPERIENCE

**2025**

Mini Guide

# Welcome



## CONTENTS

- 1 Welcome
- 3 Our Campuses
- 11 Your Student Experience
- 17 Student Support
- 19 Financial Support
- 21 Real Students Real Stories
- 23 Work Experience
- 25 University Centre St Helens
- 26 Discover Our Courses

At St Helens College, we put your student experience front and centre!

Studying is just one part of your College journey. Our goal is for you to make unforgettable memories, build lifelong friendships, and gain the confidence to thrive in your learning and in life.

Just picture exciting trips abroad, hands-on work experience, networking with industry insiders, and showing off your skills in competitions. Along with these amazing experiences, we are committed to providing unwavering support, ensuring that you feel fully integrated into our vibrant College community.

Come and immerse yourself in the unique experience of being a student at St Helens College by joining us at our next open event!



Click here to  
**attend our next  
Open Event!**

## OPEN EVENTS

### 2024

Wednesday 9th October | **5pm-7pm**

Wednesday 13th November | **5pm-7pm**

### 2025

Wednesday 29th January | **5pm-7pm**

Wednesday 12th March | **5pm-7pm**

## FOLLOW US ON SOCIALS

f @ X /sthelenscollege  
🎵 /sthelensknowsleycollege

# Our Campuses



Town Centre Campus

We have invested a lot of time and resource to ensure that your time with us is nothing short of amazing!

Across our campuses, you will find everything from a fine dining restaurant and a mock aircraft cabin, to an immersive Hospital Simulation Ward, construction site and indoor and outdoor animal units.

We're also right in the heart of a busy town centre, where you can find plenty of shops, food outlets and coffee shops!



Green Energy Skills Centre



The STEM Centre Campus



# Town Centre Campus

## Facilities include:

- Colours Restaurant
- The Lounge (Hair Salon, Nail Bar and Beauty Treatment Rooms)
- Art Studios and Workshops
- The Gym
- Mock Aircraft Cabin
- Live Recording Suite and TV Studio
- Hospital Simulation Ward
- Training Nursery
- Theatre and Dance Studio
- Starbucks
- Library

Water Street, St Helens, WA10 1PP





# The STEM Centre Campus

## Facilities include:

- Automotive Hub
- Indoor and Outdoor Animal Units
- Construction Sites (Bricklaying, Electrical, Plastering, Joinery and Painting Workshops)
- Construction Drawing Room
- Centre for Precision Engineering
- Library

Pocket Nook Street, St Helens, WA9 1TT





# Green Energy Skills Centre

Facilities include:

- Renewable Training Home
- Underfloor Heating Bays

Langtree Street, St Helens, WA9 1AR



**ideal**  
HEATING

**ZENITH ECO SOLUTIONS**

**ARCTIC  
HAYES**

**Polypipe**



# Your Student Experience

Life at St Helens College is so much more than just studying... It's about new experiences, fresh opportunities, discovering new places and creating memorable moments with friends.

You'll have the opportunity to take part in activities and fundraising events that will enhance your CV or UCAS application.

## Work Experience and Volunteering

Experience is key to securing your dream career. That is why we work closely with both local and regional organisations to provide you with industry placements and volunteering opportunities to develop your skills and experience.



## Enrichment Clubs

We have lots of opportunities for you to participate in clubs and lunchtime activities such as Manga, Lego, chess, or mindfulness colouring and crafts. We even have our own football team. We are always open to suggestions for new clubs too!



## Trips and Travel

You will have lots of opportunities to go on exciting trips in the UK and overseas. Whether it is having outdoor adventures with the National Citizen Service (NCS) or visiting popular cities, you'll make amazing memories!



# Guest Speakers and Industry Insight

There are plenty of opportunities to hear from guest speakers and industry professionals related to your course area. You will gain first-hand experience, insight and advice and will also have the chance to take part in masterclasses and activities to leave you feeling inspired.



THE DUKE OF  
EDINBURGH'S AWARD

Increase your chances of employment with The Duke of Edinburgh's globally recognised award. Learn how to become a team player and a leader and gain the desirable skills that employers are looking for! Develop life long skills, increase your confidence and build resilience, so that you are ready to take on new challenges.

## Charity Fundraising Initiatives

Staff and students across all campuses take part in fundraising activities to raise money for local and national charities including, Comic Relief, Save the Children, Children in Need, Macmillan Cancer Support, Willowbrook Hospice and Teardrops.



## Student Representatives

Students are nominated as course and campus representatives and have the opportunity to take part in conferences throughout the year and work with College management to communicate ideas and contribute to important decisions.

## Student Governors

Each year, the College's Board of Governor's appoints a student as a Student Governor. This role involves representing the student body and attending monthly meetings with College management including the Principal.





# Competitions

Many of our students have had the opportunity to showcase their skills at regional competitions such as WorldSkills UK, HIP Learner of the Year, and the Association of Hairdressers and Therapists (AHT)!



## SPARKS



# Student Support

We are here to support you

## ► Careers Advice and Guidance

Your future is important to us, and we are committed to supporting our students to plan their next steps and make informed choices through impartial careers information, advice, and guidance. We have an experienced Careers Team, who can provide lots of support across a range of areas such as researching your career, progression and further training options, support with job, apprenticeship or university applications or CV writing.

## ► Personal Development Tutor

You will have a dedicated Personal Development Tutor to guide and support you throughout your studies alongside your Course Tutor.

## ► Unifrog

Explore the wide range of careers available to you with our online tool, Unifrog. It allows you to explore your interests, and compare university-level qualifications, apprenticeships, and further education courses available to you.

Visit [www.unifrog.org](http://www.unifrog.org)

## ► Library

We have a substantial collection of learning resources to support your studies including a huge online database, journals and ebooks, which means that you can study at home, on campus or anywhere at a time to suit you.



## SAFEGUARDING & MENTAL HEALTH WELLBEING TEAM

Your wellbeing and safety at College is very important to us, which is why we have a dedicated wellbeing service for students who feel they need help or support with a range of mental health and emotional issues. The College's Safeguarding, Mental Health & Wellbeing Team is available across all campuses, whenever you need to talk to someone.

We also have a dedicated Chaplaincy Hub, which is a quiet, comfortable room, where you can rest, think, meditate or pray.



## ► Additional Learning Support

Our experienced team will work with you to provide recommendations based on your individual requirements or Educational Health Care Plan (EHCP) to support you during your time at College.

The following support is available:

- Assessment of individual needs (including exam access arrangements)
- Liaison with local authorities, exam boards and course tutors
- One-to-one skills development tutorials
- In-class support from Learning Support Assistants
- Access to specialist equipment
- Communication support for British Sign Language and Sign Supported English users
- Assistance with any personal care and healthcare needs
- Mobility assistance



# Financial Support

## Ways we can help

We want to make sure that you can make the most out of your College experience. So don't worry about the costs of coming to College – we have it covered!



Click here to **find out more!**

## Free Breakfast

We know that breakfast is the most important meal of the day, which is why all our students are entitled to a free breakfast! Enjoy free toast, cereal or porridge and a hot or cold drink, from 8.00am – 8.50am, every weekday.



## Free Bus Travel

If you are aged 16-18, we provide a FREE Arriva bus pass for the whole academic year, which you can use every weekday during term time.

If you are unable to travel using an Arriva pass, you may be eligible for a Mersey Travel bus pass, or you may receive assistance towards the cost of alternative travel.



We also have our own free bus service covering Maghull, Kirkby and Fazakerley.

For full bus route information, and times visit:

[www.sthelens.ac.uk/freebus](http://www.sthelens.ac.uk/freebus)



## Free College Lunch, Kit and Equipment\*

You may be entitled to a free lunch at any of the College's catering outlets, which is available every day, when you are timetabled to attend college.

Depending on the requirements of your course, you could also receive financial help with essential equipment, uniforms, trips and travel.

\*Terms and conditions apply.

# Real Students Real Stories

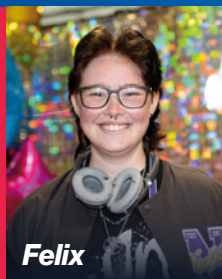
We are exceptionally proud of our students and all that they achieve. Whether they progress into employment, on to university or secure an apprenticeship, we love to celebrate their successes and like to keep in touch, even years after they've left College!



**Oscar**

**Previous School:** Homeschooled  
**Course:** Level 3 Animal Management  
**Career:** Aspiring Zoo Conservationist

"I originally joined the College on a Foundation Learning course, as I was a full-time Carer at the time, and after completing work experience in the College's animal unit, I then realised my passion for working with animals. I am really enjoying my animal management course and the tutors are amazing – always providing comfort and re-assurance when needed."



**Felix**

**Previous School:** Balshaw's Church of England High School (Leyland)  
**Course:** Level 3 Health and Social Care  
**Career:** SEN Teaching Assistant

"My tutor Joe provided incredible support and had a thorough understanding of my learning needs as I am autistic. I was absolutely thrilled with my results. I have now secured a job as a Teaching Assistant at a special educational needs school in Skelmersdale."



**Katie**

**Previous School:** Maghull High School  
**Apprenticeship:** Level 2 Plastering Apprentice at HMS  
**Career:** Aspiring Construction Manager

"My apprenticeship has sparked my interest in learning other trades to broaden my skill set. My long-term goal is to expand my knowledge in areas like joinery and tiling, potentially leading to more opportunities. I am also interested in the possibility of transitioning into a management role."



**Jamie**

**Previous School:** Hillside High School  
**Course:** Level 3 Applied Science  
**University:** Biomedical Science at University of Central Lancashire (UCLan)

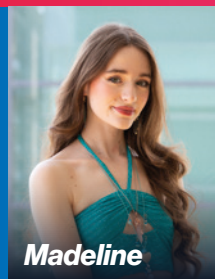
"My favourite module was learning about disease and infection as it gave me the opportunity to analyse real case studies. After my degree, I have aspirations to gain a job in private healthcare, complete a masters in Bacteriology, and eventually achieve a PHD!"



**Apollo**

**Previous School:** The Prescott School  
**Course:** Level 3 Art and Design  
**University:** Graphic Design and Illustration at Liverpool John Moores University

"I loved the creative freedom of the course, being able to explore our own themes across various mediums to meet the briefs we were set. A standout for me was the support from one of my tutors, David. He gave me advice that altered my perception of art, positively influencing my work."



**Madeline**

**Previous School:** De La Salle School  
**Course:** Level 3 Performing Arts  
**Career:** Aspiring Actress

"Completing the clowning and miming module was the highlight of my course. It brought me out of my comfort zone and allowed me to grow so much as a person and performer. I am much more confident in myself since joining the College."



# Work Experience

Achieving the right qualification is important, but it's not all that employers are looking for. They want someone who is work-ready and has the skills to hit the ground running.

Whether you choose to progress on to university, complete an apprenticeship, or jump right into employment, we're here to prepare you for your future career and help get you noticed.

That is why all our level 2 and level 3 study programmes require a minimum of 30 hours work-related experience.

Besides enhancing your CV, work placements offer an opportunity to explore your career goals and interests, meet new people, find what inspires you, develop your skills, and discover your strengths. We encourage students to seek work experience independently and begin searching for opportunities as soon as they start their course in September.

If you're struggling to find a placement that aligns with your career goals, our dedicated team of Work Placement Officers will be available to support you.



I chose to study a T Level because of the work experience I would gain alongside the course. When I'm on placement, I'm exposed to the real world, not just learning within a classroom. This experience allows me to learn much more, preparing me for the industry. Since my time on placement, I have received recognition for my patient care from my employer at Whiston Hospital.

**Nimo**

T Level Health and Social Care Student

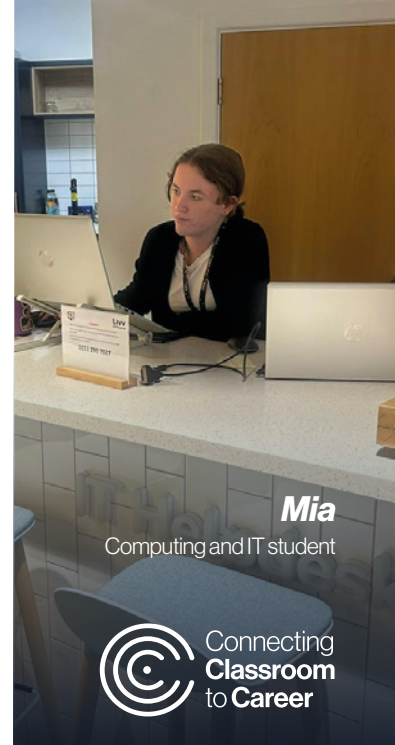


Computing and IT student, Mia completed her work placement with Livv Housing Group. After completing her placement, she has since secured an apprenticeship with them! Her employer gave her outstanding feedback:

**"Throughout her placement, Mia has seamlessly integrated with the Service Desk and wider IT team, showcasing positivity and a readiness to learn. Always eager to tackle new tasks, she works independently while remaining open to assistance when needed. Her approach to teamwork is commendable and I would strongly recommend her to future employers."**

Tony Craig  
Head of IT at Livv Housing Group

**Livv**  
housing group



**Mia**

Computing and IT student

 **Connecting  
Classroom  
to Career**



University Centre  
St Helens



St Helens College

# DISCOVER OUR COURSES

Technical • T Levels • Apprenticeships

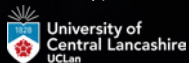
- Animal Management
- Automotive
- Business
- Catering and Hospitality
- Creative Arts
- Construction
- Digital and IT
- Early Years
- Engineering
- Hairdressing and Beauty
- Health and Social Care
- Music and Performing Arts
- Public and Uniformed Services
- Science
- Sport and Fitness
- Travel and Tourism

Did you know we also have our own University Centre? That means once you complete your studies, you could stay with us to study a degree at **University Centre St Helens**.



- Applied Science (Chemistry)
- Applied Microbiology
- Business and Management
- Criminal Justice
- Early Years
- Engineering
- Exercise, Health and Fitness
- Fine Art Painting
- Game Art
- Graphic Design
- Media Production
- Theatre and Performance
- Tourism and Hospitality Management

Our university partners:



Click here to **download our 2025 College 16+ Course Guide**



# OPEN EVENTS

## 2024

Wednesday 9th October | **5pm-7pm**

Wednesday 13th November | **5pm-7pm**

## 2025

Wednesday 29th January | **5pm-7pm**

Wednesday 12th March | **5pm-7pm**



**St Helens College**

0800 99 66 99

[enquire@sthelens.ac.uk](mailto:enquire@sthelens.ac.uk)

[J](#) [f](#) [@](#) [X](#) /sthelenscollege

[www.sthelens.ac.uk](http://www.sthelens.ac.uk)